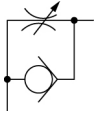


Elbow - AS*2*1F-A AS2201F-01-06SA

Veri Sayfası

General series information

- Port Size: M5, 10-32 UNF, 1/8, 1/4, 3/8, 1/2
- Applicable Tubing O.D.: Ø 2 to Ø 16 mm and Ø 1/8" to Ø 1/2"
- Operating Pressure Range: 0.1 to 1 MPa.

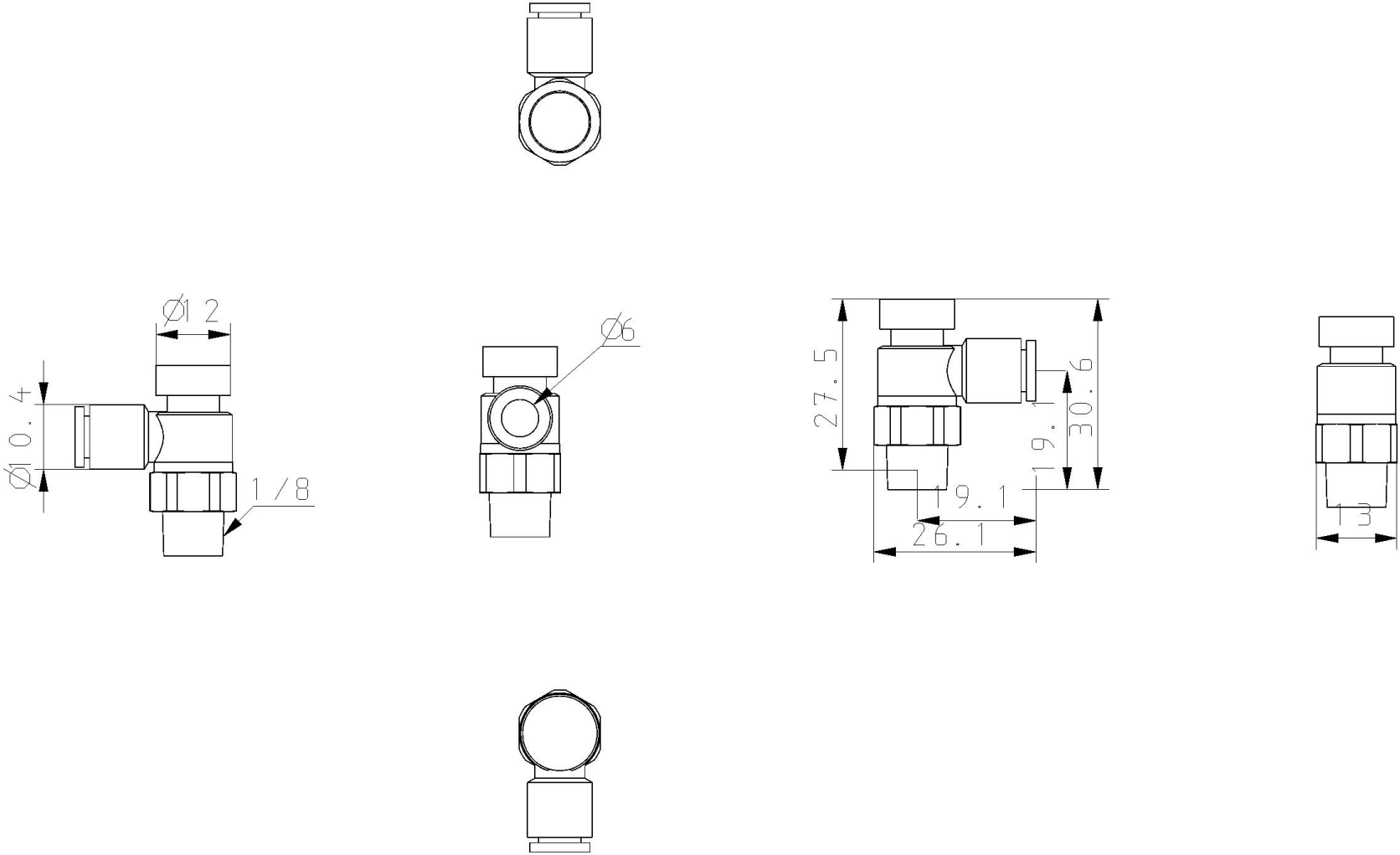


Speed controller, meter-out

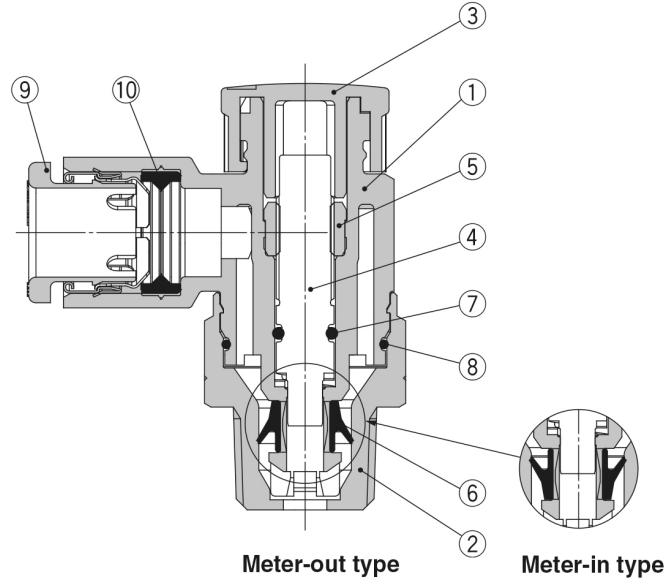
Standard specifications

Type	2 (Elbow)
Across Flat [H]	Body Size 1: 9mm; Body Size 2, 3, 4 None
Body Size	2 (1/8, 1/4)
Control Type	0 (Meter-out)
Applicable Tubing O.D.	Ø6
Port Size	01 (1/8)
Seal	S (w/Sealant)
Thread Type	R or Metric
Clean Series	None
Made to Order	None
Basınç ortamı	Compressed air
Maksimum basınç ortamı sıcaklığı	60 °C
Minimum basınç ortamı sıcaklığı	-5 °C
Maksimum çalışma basıncı	1 MPa
Minimum çalışma basıncı	0.1 MPa
Patlama basıncı	1.5 MPa
Maksimum ortam sıcaklığı	60 °C
Minimum ambient temperature	-5 °C
Critical pressure ratio	0.3
Sonic conductance dm ³ /(s·bar)	0.8

Number of needle rotations	10
Ağırlık	0.010 Kg



Yapı



Component Parts

No.	Description	Material	Note
1	Body A	PBT	
2	Body B	Brass	Electroless nickel plating
3	Knob	POM	
4	Needle	PBT	
5	Needle guide	Brass	Electroless nickel plating
6	U-seal	HNBR	
7	O-ring	NBR	
8	O-ring	NBR	
9	Cassette	—	
10	Seal	NBR	

Ek Bilgi

Katalog

[AS-1F_FG-A-Dd_EU.pdf](#)