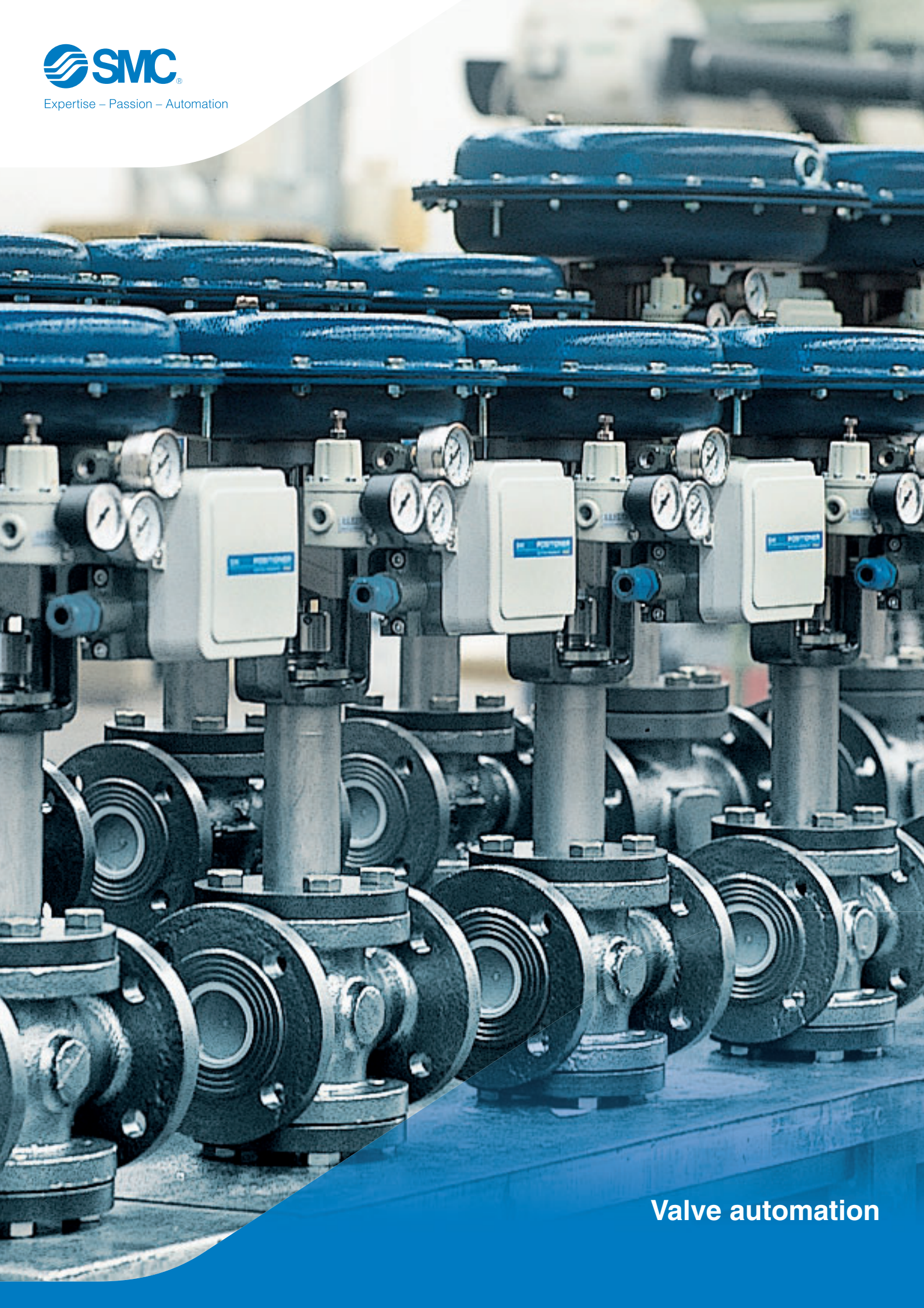
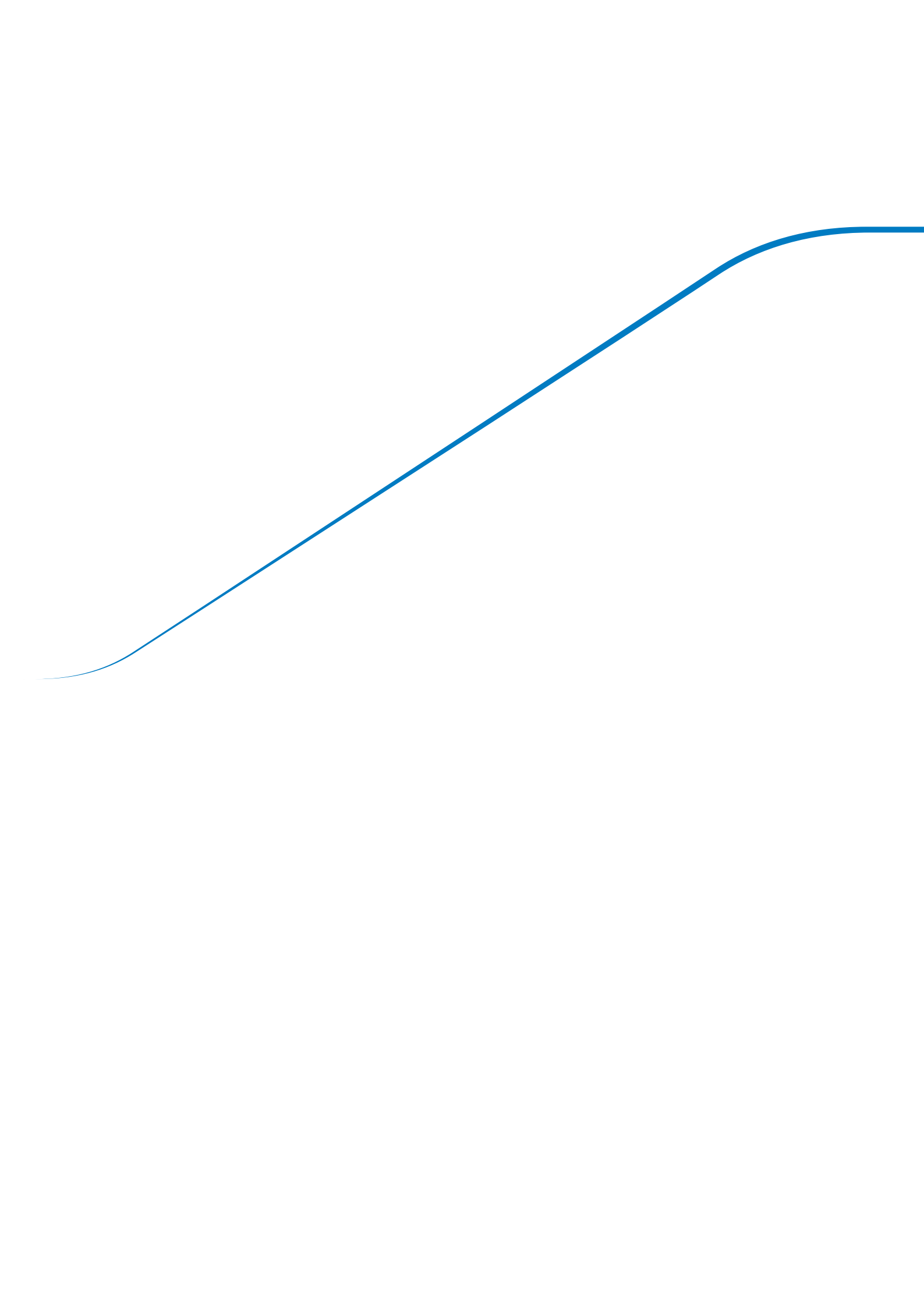




Expertise – Passion – Automation



Valve automation



Valve automation

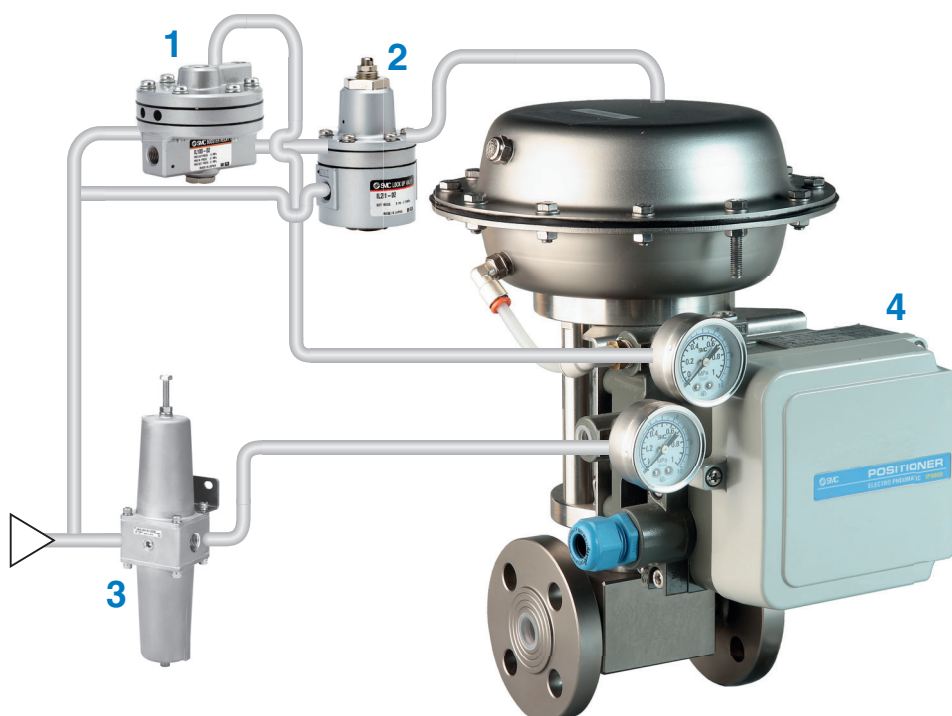


With the constant need to improve productivity, increase efficiency and minimise downtime in the process control industry, valve automation applications require increasingly sophisticated solutions.

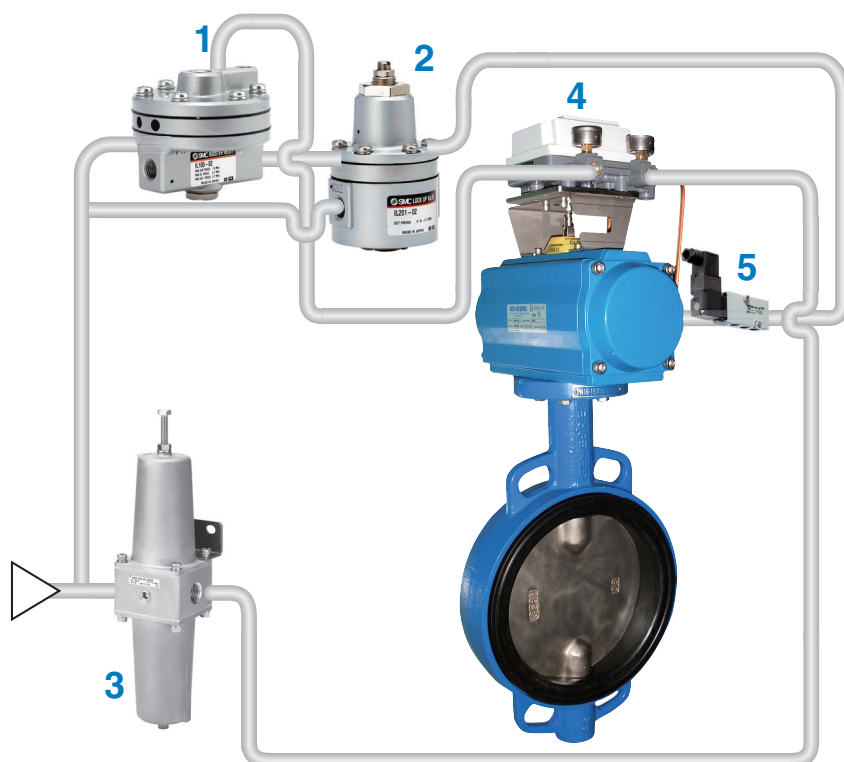
In order to satisfy these needs, at SMC we have a wide range of solutions comprising 12,000 basic products and more than 700,000 variations. This enables us to always have specific support for the process industry, regardless of whether it is oil & gas, energy, chemical, food & beverage, pulp and paper or water treatment.

Take a look at the following pages to learn about our specific solutions for valve automation and contact us to discuss how we can improve your automation system even further, with tailor-made developments.

Linear type actuator



Rotary type actuator



Where & what for?

- 1 Booster relay**
An ideal solution to increase the operating speed of an actuator.
Primarily to be used combined with a positioner.
- 2 Lock-up valve**
To keep the actuator at last position in case of air supply failure.
- 3 Filter regulators**
To be fitted normally with a pressure regulator and filter. Altogether they control the pressure and ensure the right air quality.
- 4 Positioner**
Use it to keep an automatic valve open at a specified position, according to an input signal.
- 5 Solenoid valve**
For the ON/OFF control of automatic valves.

Positioners



Smart positioner IP8001/8101 Series

- Lever type (IP8001) and rotary type (IP8101)
- Single and double action
- Input current: 4 to 20 mA and/or HART Protocol
- Feedback signal integrated
- ATEX compliant.



Electro-pneumatic positioner IP8000/8100 Series

- Lever type (IP8000) and rotary type (IP8100)
- Single and double action
- Input current: 4 to 20 mA
- ATEX compliant.



Pneumatic positioner IP5000/5100 Series

- Lever type (IP5000) and rotary type (IP5100)
- Single and double action
- Pneumatic input: 0.02 to 0.1 Mpa (3 to 15 Psi)
- ATEX compliant.



Cylinder positioner IP200 Series

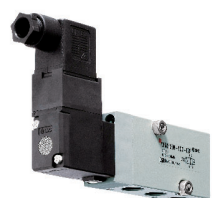
- Double action
- Pneumatic input: 0.02 to 0.1 Mpa (3 to 15 Psi)
- Applicable stroke: from 25 to 300 mm
- Applicable bore size: Ø 50 or more.

Positioners mounting on valves

Throttle valve with electro-pneumatic regulation



Solenoid valves



NAMUR solenoid valves VFN Series

- 5/2 solenoid valve for air and inert gas
- Conforms to the NAMUR directive
- Single and double acting
- Flow rate: 1379 NI/min.



5 Port solenoid valve 52-SY Series

- ATEX 2G IIC Ex ia
- 5/2 and 5/3 solenoid valve for air and inert gas
- Base mounted type/Body ported type
- Single and double acting.



5 Port solenoid valve 50-VFE / 50-VPE Series

- ATEX 2G IIC Exd
- 5/2 and 5/3 solenoid valve for air and inert gas
- Base mounted type/Body ported type
- Single and double acting.

Booster relay



Booster relay IL100 Series

- Pilot pressure: max 0.7 MPa
- Flow rate: 1.000 l/min
- Options:
 - High temperature: -5 to 100 °C
 - Low temperature: -30 to 60 °C
 - Cooper-free
 - Stainless steel.



Booster relay XT240 Series

- Pilot pressure: max 0.7 MPa
- Flow rate: 3.000 l/min
- Options:
 - High temperature: -5 to 100 °C
 - Low temperature: -30 to 60 °C
 - Stainless steel.

Lock-up valve & Speed regulator



Lock-up valve IL201/211/220 Series

- Three options: single acting, double acting, 3 Port
- Pilot pressure: 0.14 to 0.7 MPa
- Flow rate: 900 NI/min
- Options:
 - High temperature: -5 to 100 °C
 - Low temperature: -30 to 60 °C
 - Stainless steel: -40 to 70 °C
 - External parts cooper-free.



Speed regulator AS□000-X800 Series

- Size: up to 1/2" NPT
- Temperature Range: - 45 to 80 °C
- Material: AISI 316.

Filter regulator



Filter regulator 55-AW30-60-X2317 Series

- Filtration degree: 5 µm
- Flow rate: up to 10000 NI/min
- Regulation range: 0.05 to 0.85 MPa
- Material: Aluminium coated with AISI 410 screws
- Temperature range: - 30 to 60 °C
- ATEX: II2 GD c IIC T6



Filter regulator IW212 Series

- Filtration degree: 5 µm
- Flow rate: up to 400 NI/min
- Regulation range: 0.02 to 0.5 MPa
- Options:
 - High temperature: -10 to 100 °C
 - Low temperature: -30 to 60 °C
 - External parts cooper-free



Filter regulator 55-AW30-60-X2622 Series

- Filtration degree: 5 µm
- Flow rate: up to 10000 NI/min
- Regulation range: 0.05 to 0.85 Mpa
- Material AISI 316
- Temperature range: -40 to 80 °C
- ATEX: II2 GD c IIC T6

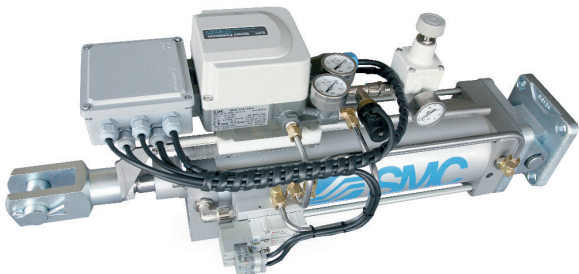
Positioners mounting on cylinders

Opening/closing regulation of a damper valve



Complete solution

Modulating linear actuator with control system



Electroneumatic positioner on control valve



Analogue Unit

Input device



Output device

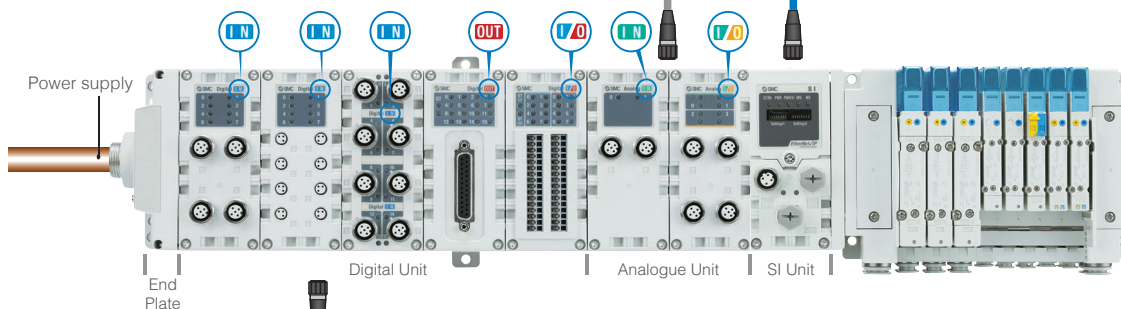


SI Unit



Handheld Terminal
Parameter setting and
I/O monitor tool

- I/N Input unit
- O/U Output unit
- I/O Input/Output Unit



Digital Unit

Input device



Output device

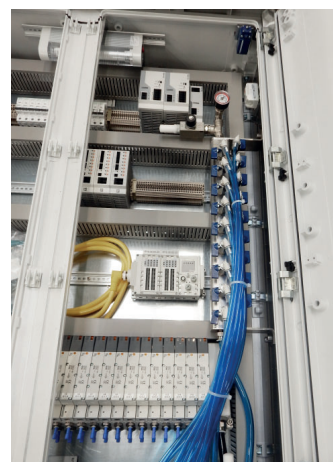


Design your own customised cabinet

We can either build your own design, or give you a hand designing it.

At SMC we have teams of engineers specialised in developing simple assemblies up to more complex control systems. All of them are pre-tested to guarantee you the best performance.

Control cabinet





Expertise – Passion – Automation

SMC Corporation

Akihabara UDX 15F, 4-14-1
Sotokanda, Chiyoda-ku, Tokyo 101-0021, JAPAN
Phone: 03-5207-8249
Fax: 03-5298-5362

Austria	+43 (0)2262622800	www.smc.at	office@smc.at
Belgium	+32 (0)33551464	www.smc.be	info@smc.be
Bulgaria	+359 (0)2807670	www.smc.bg	office@smc.bg
Croatia	+385 (0)13707288	www.smc.hr	office@smc.hr
Czech Republic	+420 541424611	www.smc.cz	office@smc.cz
Denmark	+45 70252900	www.smc.dk.com	smc@smc.dk.com
Estonia	+372 6510370	www.smc.pneumatics.ee	smc@smc.pneumatics.ee
Finland	+358 207513513	www.smc.fi	smc@smc.fi
France	+33 (0)164761000	www.smc-france.fr	info@smc-france.fr
Germany	+49 (0)61034020	www.smc.de	info@smc.de
Greece	+30 210 2717265	www.smcchellas.gr	sales@smcchellas.gr
Hungary	+36 23513000	www.smc.hu	office@smc.hu
Ireland	+353 (0)14039000	www.smc.pneumatics.ie	sales@smc.pneumatics.ie
Italy	+39 0292711	www.smcitalia.it	mailbox@smcitalia.it
Latvia	+371 67817700	www.smc.lv	info@smc.lv

Lituania	+370 5 2308118	www.smc.lt	info@smc.lt
Netherlands	+31 (0)205318888	www.smc.nl	info@smc.nl
Norway	+47 67129020	www.smc-norge.no	post@smc-norge.no
Poland	+48 222119600	www.smc.pl	office@smc.pl
Portugal	+351 226166570	www.smc.eu	postpt@smc.smces.es
Romania	+40 213205111	www.smcromania.ro	smcromania@smcromania.ro
Russia	+7 8127185445	www.smc-pneumatik.ru	info@smc-pneumatik.ru
Slovakia	+421 (0)413213212	www.smc.sk	office@smc.sk
Slovenia	+386 (0)73885412	www.smc.si	office@smc.si
Spain	+34 945184100	www.smc.eu	post@smc.smces.es
Sweden	+46 (0)86031200	www.smc.nu	post@smc.nu
Switzerland	+41 (0)523963131	www.smc.ch	info@smc.ch
Turkey	+90 212 489 0 440	www.smc.pneumatik.com.tr	info@smc.pneumatik.com.tr
UK	+44 (0)845 121 5122	www.smc.uk	sales@smc.uk