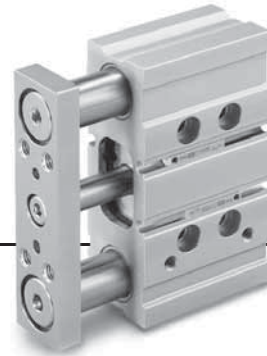


Compact Guide Cylinder/ Rectangular Piston Type

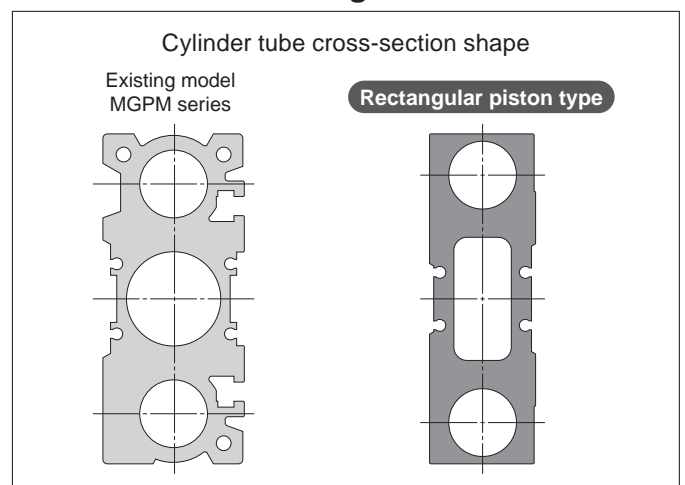


Size: 25, 32

Now more lightweight and compact due to the adoption of a rectangular piston

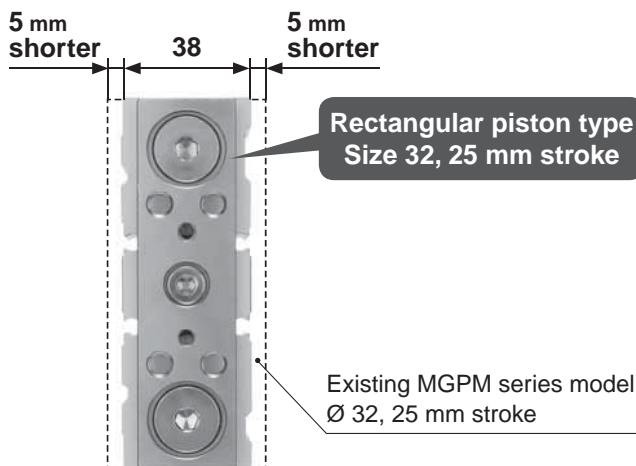
Width	21%^{*1} reduction 48 mm → 38 mm
Weight	37%^{*2} reduction 3.29 kg → 2.07 kg
Overall length	7%^{*1} reduction 100 mm → 93 mm

■ The allowable lateral load and the allowable kinetic energy are the same as those of the existing MGP series model.

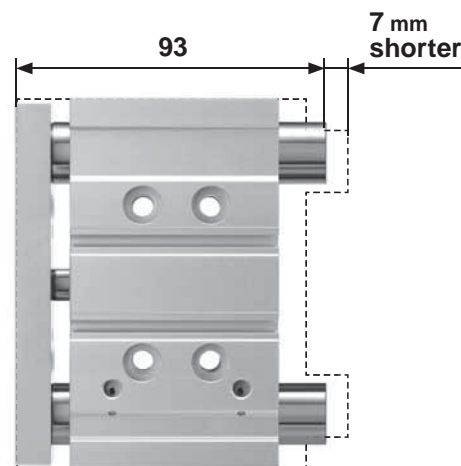


*1 Compared with the existing MGPM series model, Ø 32, 25 mm stroke
*2 Compared with the existing MGPM series model, Ø 32, 150 mm stroke

■ Shortened width

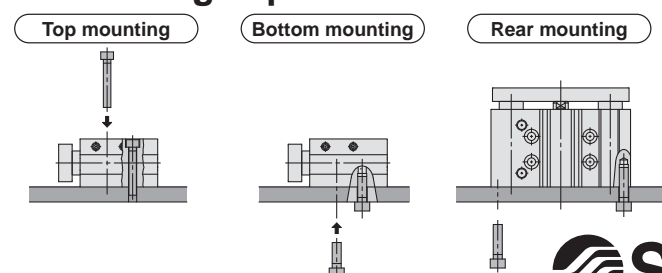


■ Shortened overall length



■ The allowable rotational torque of the plate and the non-rotating accuracy are the same as those of the existing MGP series model.

■ Mounting is possible from 3 directions.



MGPM-X3159



MGPM-X3159



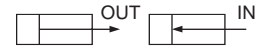
Specifications

Size	25 (Equiv. Ø 25 piston area)	32 (Equiv. Ø 32 piston area)
Action	Double acting	
Fluid	Air	
Proof pressure	1.05 MPa	
Max. operating pressure	0.7 MPa	
Min. operating pressure	0.1 MPa	
Ambient and fluid temperatures	5 to 60 °C	
Piston speed	50 to 500 mm/s	
Cushion	Rubber bumper on both ends	
Lubrication	Not required (Non-lube)	
Stroke length tolerance	$^{+1.5}_0$ mm	
Allowable kinetic energy	0.18 J	0.29 J
Allowable lateral load (at 50 stroke)	5.0 kg	16.7 kg

Standard Strokes

Size	Standard stroke [mm]
25	20, 30, 50, 100, 150
32	25, 50, 75, 100, 150

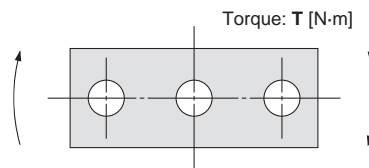
Theoretical Output



Size	Rod size [mm]	Operating direction	Piston area [mm ²]	Operating pressure [MPa]									
				0.2	0.3	0.4	0.5	0.6	0.7	0.8	0.9	1.0	
25	10	OUT	491	98	147	196	245	295	344	393	442	491	
		IN	412	82	124	165	206	247	289	330	371	412	
32	14	OUT	804	161	241	322	402	483	563	643	724	804	
		IN	650	130	195	260	325	390	455	520	585	650	

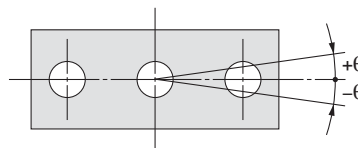
* Theoretical output [N] = Pressure [MPa] x Piston area [mm²]

Allowable Rotational Torque of Plate



Size	Stroke [mm]						
	20	25	30	50	75	100	150
25	1.76	—	1.55	1.25	—	2.57	2.02
32	—	6.35	—	5.13	5.69	4.97	3.98

Non-rotating Accuracy of Plate

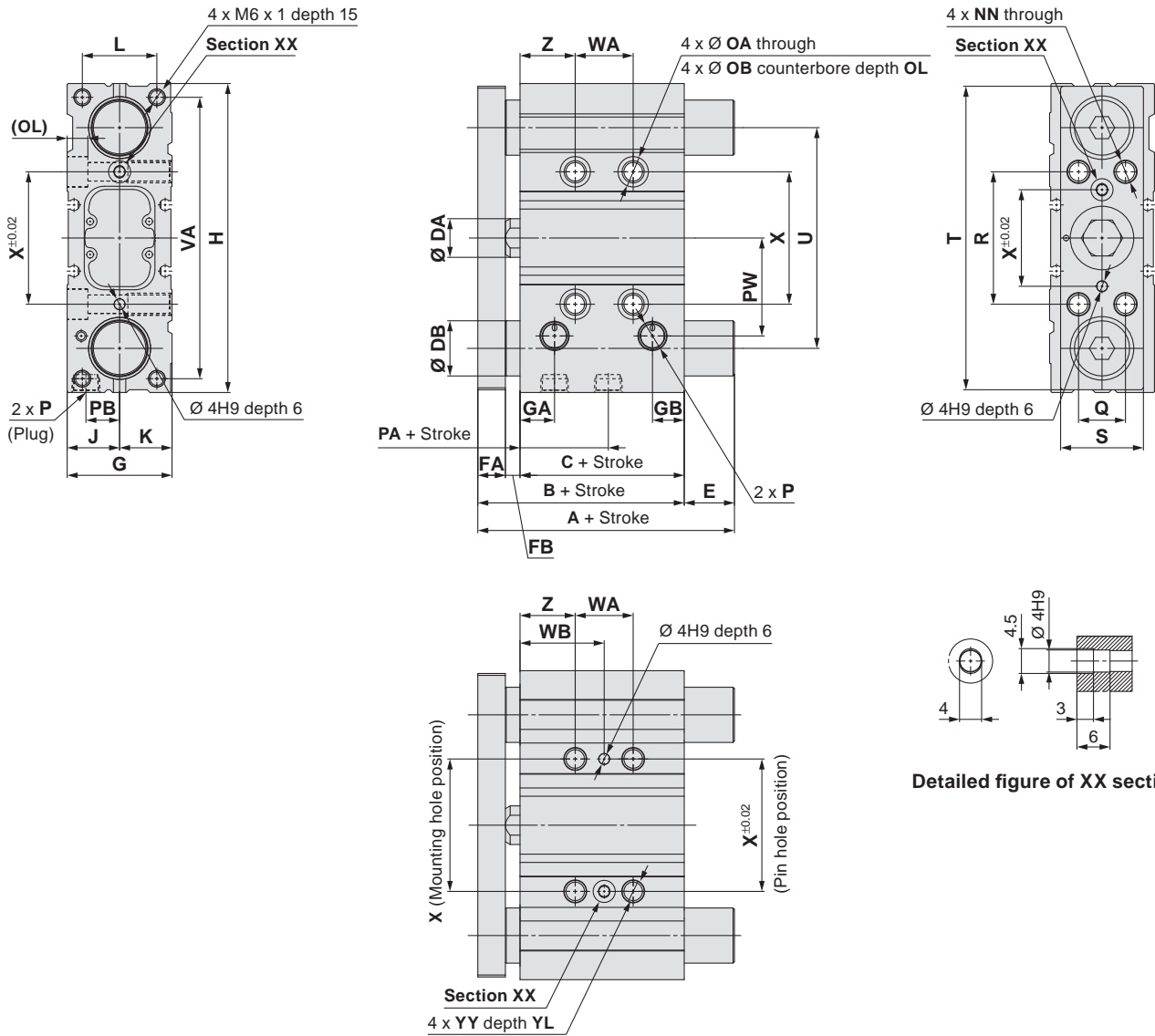


Non-rotating accuracy θ when retracted and when no load is applied should be not more than the values shown in the table.

Size	Non-rotating accuracy θ
25	$\pm 0.06^\circ$
32	$\pm 0.05^\circ$

Dimensions

MGPM□-□-X3159



Bottom view

Detailed figure of XX section

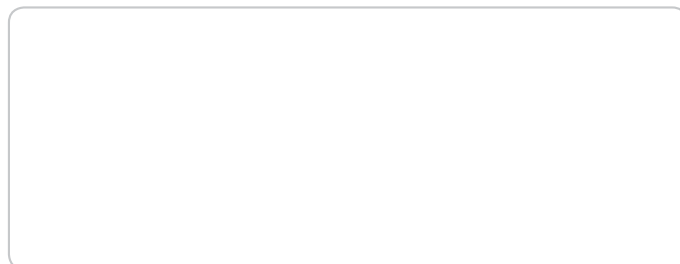
Size	Standard stroke	A		B	C	DA	DB	E		FA	FB	G	GA	GB	H	J	K
		50 st or less	Over 50 st 150 st or less					50 st or less	Over 50 st 150 st or less								
25	20, 30, 50, 100, 150	46	75.5	46	31.7	10	16	0	29.5	9	5.3	32	10.5	9.2	93	16	16
32	25, 50, 75, 100, 150	68	86.5	49.8	34.5	14	20	18.2	36.7	10	5.3	38	12.5	11.5	112	19	19

Size	L	NN	OA	OB	OL	P	PA	PB	PW	Q	R	S	T	U	VA	X	YY	YL	Z
25	22	M6 x 1	5.4	9.5	5.5	M5 x 0.8	9	11	26	13	39	25	91	66	84	39	M6 x 1	12	18
32	27	M8 x 1.25	6.7	11	7.5	Rc1/8	7	12	35.5	17	48	30	110	80	102	48	M8 x 1.25	16	20

Size	WA			WB		
	30 st or less	Over 30 st 100 st or less	Over 100 st 150 st or less	30 st or less	Over 30 st 100 st or less	Over 100 st 150 st or less
25	17	37	113	26.5	36.5	74.5

Size	WA				WB			
	25 st or less	Over 25 st 50 st or less	Over 50 st 100 st or less	Over 100 st 150 st or less	25 st or less	Over 25 st 50 st or less	Over 50 st 100 st or less	Over 100 st 150 st or less
32	21	45	49	125	30.5	42	44	82

[mm]



SMC Corporation (Europe)

Austria	+43 (0)2262622800	www.smc.at	office@smc.at
Belgium	+32 (0)33551464	www.smc.be	info@smc.be
Bulgaria	+359 (0)2807670	www.smc.bg	office@smc.bg
Croatia	+385 (0)13707288	www.smc.hr	office@smc.hr
Czech Republic	+420 541424611	www.smc.cz	office@smc.cz
Denmark	+45 70252900	www.smc.dk.com	smc@smc.dk.com
Estonia	+372 6510370	www.smc.pneumatics.ee	info@smc.ee
Finland	+358 207513513	www.smc.fi	smc.fi@smc.fi
France	+33 (0)164761000	www.smc-france.fr	info@smc-france.fr
Germany	+49 (0)61034020	www.smc.de	info@smc.de
Greece	+30 210 2717265	www.smchellas.gr	sales@smchellas.gr
Hungary	+36 23513000	www.smc.hu	office@smc.hu
Ireland	+353 (0)14039000	www.smcautomation.ie	sales@smcautomation.ie
Italy	+39 03990691	www.smcitalia.it	mailbox@smcitalia.it
Latvia	+371 67817700	www.smc.lv	info@smc.lv

Lithuania	+370 5 2308118	www.smclt.lt	info@smclt.lt
Netherlands	+31 (0)205318888	www.smc.nl	info@smc.nl
Norway	+47 67129020	www.smc-norge.no	post@smc-norge.no
Poland	+48 222119600	www.smc.pl	office@smc.pl
Portugal	+351 214724500	www.smc.eu	apoioclientept@smc.smces.es
Romania	+40 213205111	www.smcromania.ro	smcromania@smcromania.ro
Russia	+7 8123036600	www.smc.eu	sales@smcru.com
Slovakia	+421 (0)413213212	www.smc.sk	office@smc.sk
Slovenia	+386 (0)73885412	www.smc.si	office@smc.si
Spain	+34 945184100	www.smc.eu	post@smc.smces.es
Sweden	+46 (0)86031200	www.smc.nu	smc@smc.nu
Switzerland	+41 (0)523963131	www.smc.ch	info@smc.ch
Turkey	+90 212 489 0 440	www.smc.pnomatik.com.tr	info@smc.pnomatik.com.tr
UK	+44 (0)845 121 5122	www.smc.uk	sales@smc.uk

SMC Corporation Akihabara UDX 15F, 4-14-1, Sotokanda, Chiyoda-ku, Tokyo 101-0021, JAPAN Phone: 03-5207-8249, Fax: 03-5298-5362