

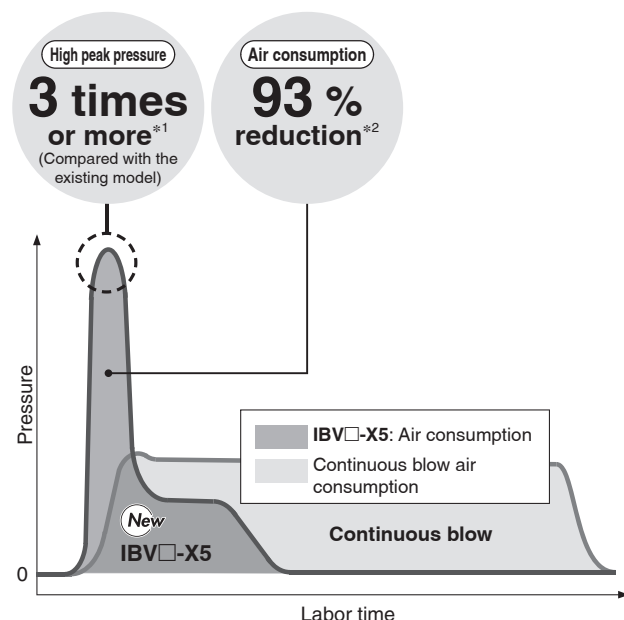
Impact Blow Valve



Increased impact force due to higher peak pressure
Drastic reduction in air consumption and labour time

Compact design allows for installation in narrow spaces

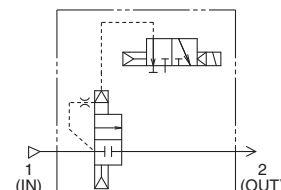
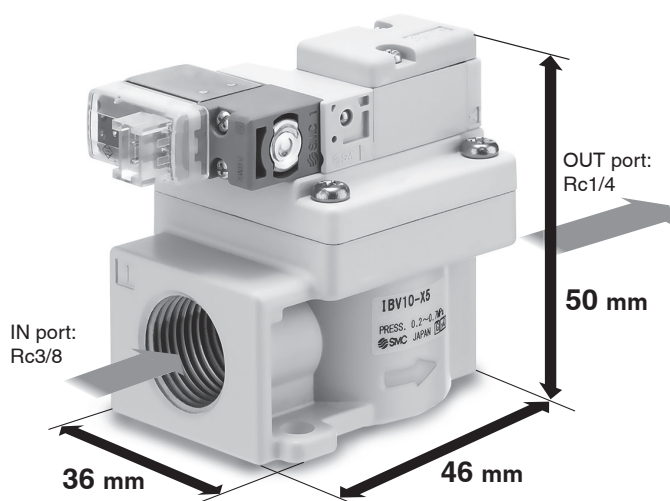
Solenoid Type/IBV□-X5/X7



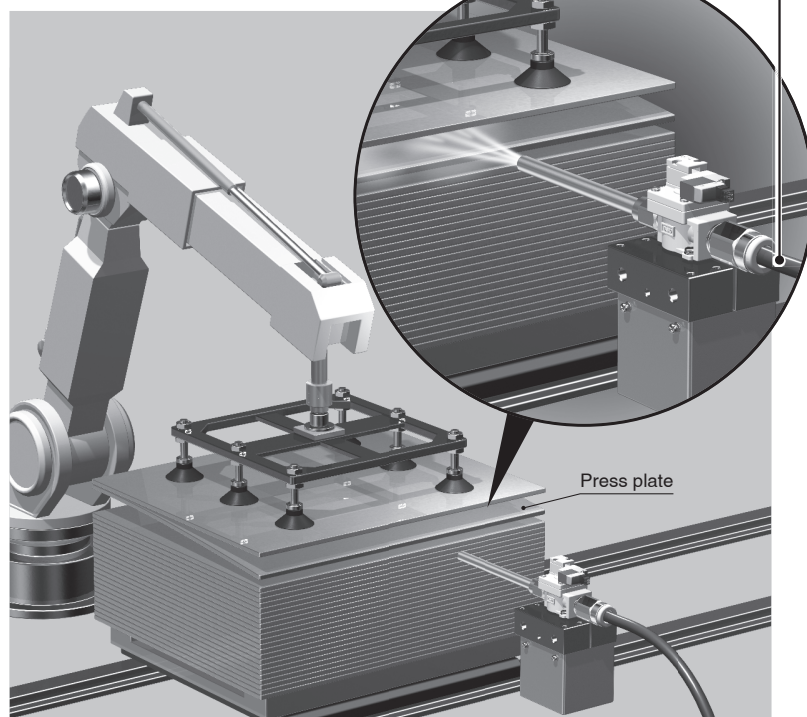
*1 According to blow conditions

When the piping volume is 100 cc (Piping I.D. ϕ 13, 800 mm)

*2 Pressure: 0.5 MPa (Based on SMC's specific testing conditions)



■ For the separation of workpieces stuck together with oil, etc.



■ Use of piping instead of tanks (Tankless construction)

- Miniaturization of valves
- Instantaneous discharge and high peak pressure

The peak pressure can be adjusted by the inlet piping volume.

I.D.	Length [mm]	Peak pressure (Compared with the existing model)
ϕ 8	2000	2 times
ϕ 10	1300	2.5 times
ϕ 13	800	3 times

* Based on SMC's measurement conditions

* Oscillation may occur if only a minimal amount of air is supplied. Use inlet piping with an inside diameter of ϕ 8 or more, and take measures to prevent the pressure from dropping as much as possible.

Sold Separately

Long nozzle

Nozzle length:
50/100/150/300 mm

Long nozzle with a silencer

80 dB(A)*1 or less

*1 Based on SMC's

measurement conditions

· Supply pressure: 0.5 MPa

· Inlet side piping conditions: 100 cc

IBV□-X5/X7



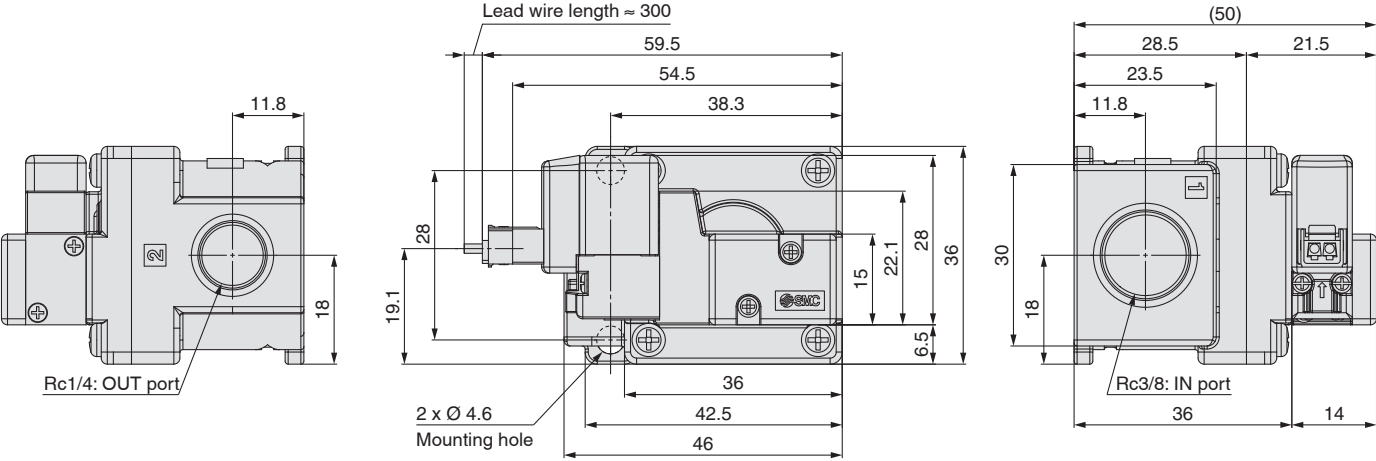
20-EU746-UK

Specifications

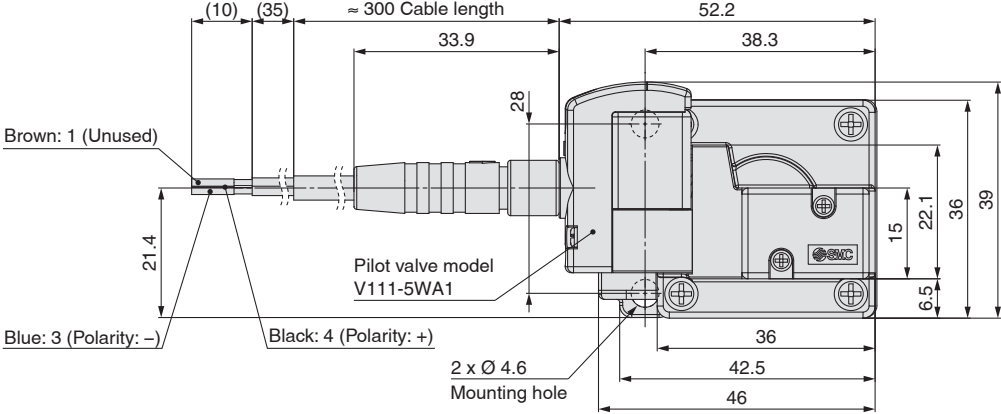
Model		L plug connector specifications IBV10-X5-Q	M8 connector specifications IBV10-X7-Q
Valve specifications	Fluid	Air	
	Operating pressure range	0.15 to 0.7 MPa	
	Ambient temperature	+5 to 50 °C	
	Fluid temperature		
	Impact/Vibration resistance m/s ²	150/30	
	Enclosure	Dustproof	IP65
Solenoid specifications	Coil rated voltage	24 VDC	
	Power consumption	0.35 W	
	Allowable voltage fluctuation	±10 % of rated voltage	
	Allowable leakage voltage	3 % or less of rated voltage	
	Lead wire	HVSF, 0.3 mm ² , Ø 1.55 mm	AWG25

Dimensions

L Plug Connector Specifications



M8 Connector Specifications



Use Precautions

The air blow pressure is strong. Pay attention to the following when using the product.

1. Do not use this product with the product directed at the human body as it may cause injury.
2. Before use, make sure that the blow pressure, or blow, will not cause surrounding objects to scatter and injure others or damage workpieces, equipment, etc., in the vicinity.
3. Air pressure may cause the nozzle to fly off during operation if it is not properly tightened. To prevent this, be sure to check the nozzle for loosening by pulling on it with your hands before use.
4. If air is supplied from the air blow outlet by mistake, it may result in product failure.

Selection Precautions

1. This product is based on the concept that the piping volume connected to the inlet side can be used in place of a tank, making a built-in tank unnecessary. It is recommended that the inside diameter of the inlet piping be as thick as possible.

Example) Inlet volume: 100 cc (piping volume equivalent to IBG series)

- Piping I.D.: Ø 8 Length: 2000 mm
- Piping I.D.: Ø 10 Length: 1300 mm
- Piping I.D.: Ø 13 Length: 800 mm

- * The blow pressure discharged can be adjusted by adjusting the inlet side piping conditions.
- * When not enough air is being supplied, the **main valve will oscillate, which may result in a reduced product life.** Therefore, use inlet piping with an inside diameter of Ø 8 or more, and take measures to prevent the pressure from dropping as much as possible.

2. For the nozzle to be mounted on the outlet side, a dedicated nozzle is recommended. If operating noise is a concern, a silencing nozzle is also available.

Nozzle type	Part number
Dedicated nozzle	IBG1-12-10-□
Silencing nozzle	IBG1-12S
Set including the dedicated nozzle and silencing nozzle	IBG1-12-10-□S

* □: Nozzle length (50, 100, 150, 300)

3. The impact resistance and vibration resistance of this product are 150 [m/s²] and 30 [m/s²], respectively. Be sure to prevent impact or vibration exceeding the allowable values from being applied to the product.



SMC Corporation (Europe)

Austria	+43 (0)2262622800	www.smc.at	office@smc.at
Belgium	+32 (0)33551464	www.smc.be	info@smc.be
Bulgaria	+359 (0)2807670	www.smc.bg	office@smc.bg
Croatia	+385 (0)13707288	www.smc.hr	office@smc.hr
Czech Republic	+420 541424611	www.smc.cz	office@smc.cz
Denmark	+45 70252900	www.smc.dk.com	smc@smcdk.com
Estonia	+372 6510370	www.smc.pneumatics.ee	info@smcee.ee
Finland	+358 207513513	www.smc.fi	smcfi@smc.fi
France	+33 (0)164761000	www.smc-france.fr	info@smc-france.fr
Germany	+49 (0)61034020	www.smc.de	info@smc.de
Greece	+30 210 2717265	www.smc.hellas.gr	sales@smchellas.gr
Hungary	+36 23513000	www.smc.hu	office@smc.hu
Ireland	+353 (0)14039000	www.smcautomation.ie	sales@smcautomation.ie
Italy	+39 03990691	www.smcitalia.it	mailbox@smcitalia.it
Latvia	+371 67817700	www.smc.lv	info@smc.lv

Lithuania	+370 5 2308118	www.smc.lt	info@smclt.lt
Netherlands	+31 (0)205318888	www.smc.nl	info@smc.nl
Norway	+47 67129020	www.smc-norge.no	post@smc-norge.no
Poland	+48 222119600	www.smc.pl	office@smc.pl
Portugal	+351 214724500	www.smc.eu	apoioclientept@smc.smces.es
Romania	+40 213205111	www.smcromania.ro	smcromania@smcromania.ro
Russia	+7 8123036600	www.smc.eu	sales@smcru.com
Slovakia	+421 (0)413213212	www.smc.sk	office@smc.sk
Slovenia	+386 (0)73885412	www.smc.si	office@smc.si
Spain	+34 945184100	www.smc.eu	post@smc.smces.es
Sweden	+46 (0)86031200	www.smc.nu	smc@smc.nu
Switzerland	+41 (0)523963131	www.smc.ch	helpcenter@smc.ch
Turkey	+90 212 489 0 440	www.smcnpomatik.com.tr	info@smcnpomatik.com.tr
UK	+44 (0)845 121 5122	www.smc.uk	sales@smc.uk