

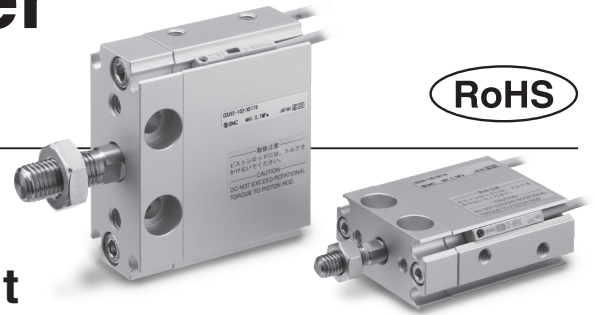
# Free Mount Cylinder

## Compact Type

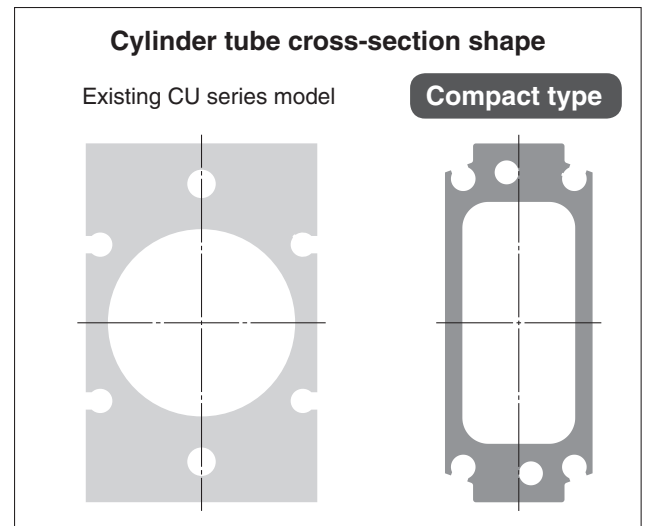


Size: 20, 32

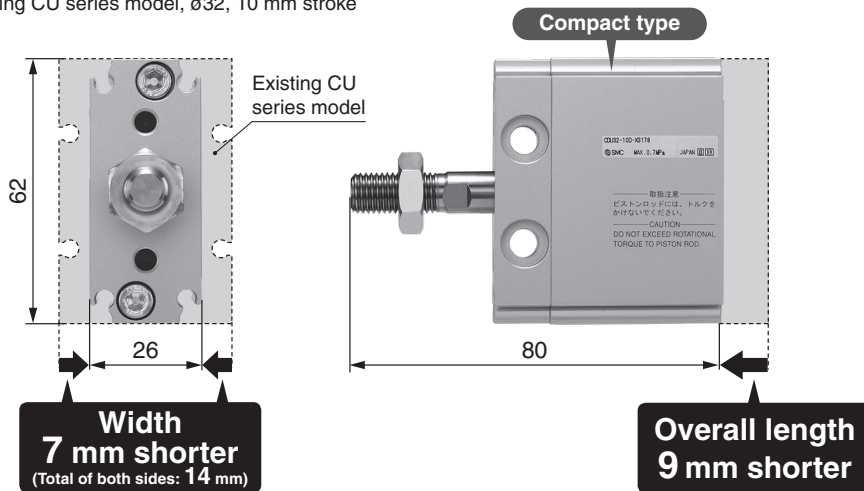
Now, more compact and lightweight due to the adoption of a rectangular shape piston!



Weight	<b>49 % reduction</b> 389 g → 197 g
Width	<b>35 % reduction</b> 40 mm → 26 mm
Overall length	<b>10 % reduction</b> 89 mm → 80 mm



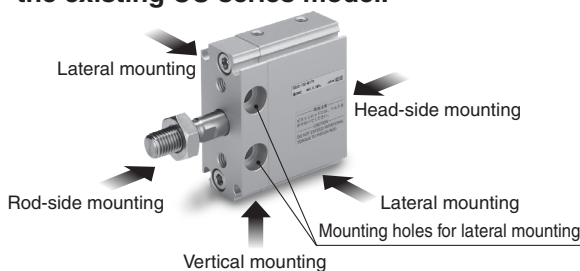
\* Compared with the existing CU series model, ø32, 10 mm stroke



■ **Mounting is possible from 5 directions.**

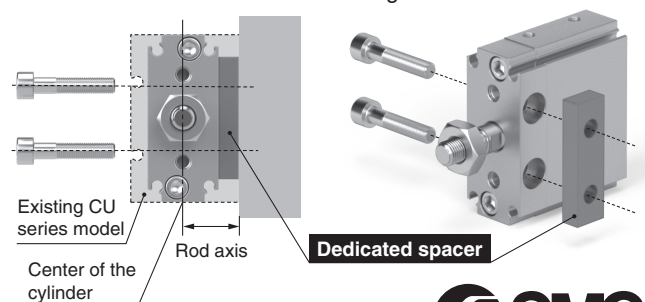
(The same as the existing CU series model)

The pitch and diameter of the mounting holes for lateral mounting are the same as those of the existing CU series model.



■ **The dedicated spacer allows for interchangeable height when laterally mounted.**

When the dedicated spacer is used, the distance to the rod axis is the same as that on the existing model.



# CDU-X3178



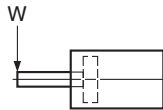
19-EU717-UK

# CDU-X3178

## Specifications

Size	20 (Equiv. $\phi 20$ piston area)	32 (Equiv. $\phi 25$ piston area)
Fluid	Air	
Proof pressure	1.05 MPa	
Max. operating pressure	0.7 MPa	
Min. operating pressure	0.05 MPa	
Ambient and fluid temperatures	-10 to 60 °C (No freezing)	
Lubrication	Non-lube	
Piston speed	50 to 500 mm/s	
Cushion	Rubber bumper	
Rod end thread	Male thread	
Stroke length tolerance	$^{+1.0}_0$ mm	
Rod non-rotating accuracy	$\pm 1^\circ$	$\pm 0.8^\circ$

\* This is a non-rotating rod type cylinder.

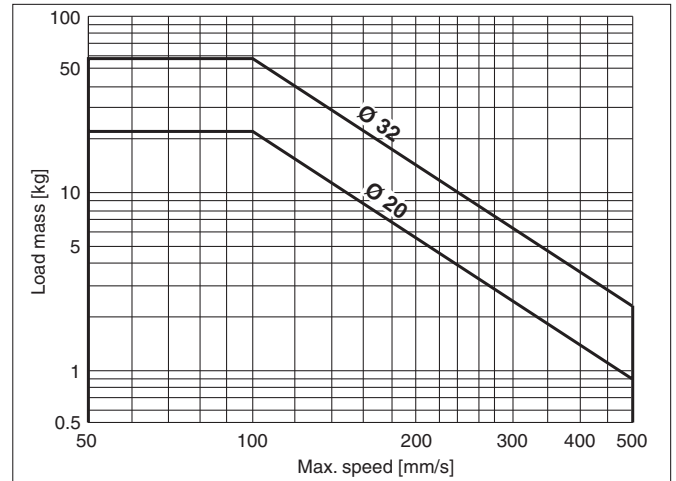


## Allowable Lateral Load at Rod End

Size	Stroke [mm]								
	5	10	15	20	25	30	40	50	
20	3.0	2.7	2.5	2.3	2.1	2.0	1.8	1.6	
32	7.1	6.6	6.1	5.7	5.4	5.1	4.6	4.1	

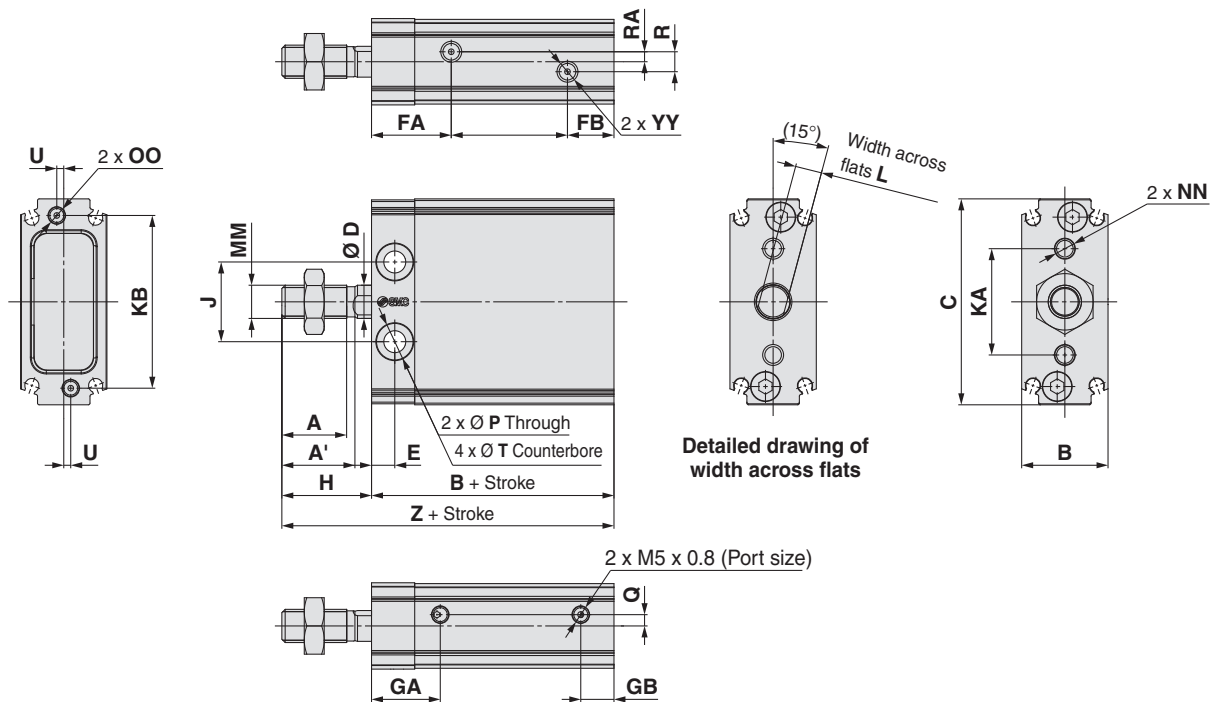
[N]

## Operating Speed



Be sure to connect a speed controller to the cylinder and adjust its speed to 500 mm/s or less. If a load is to be attached to the end of the rod, adjust the speed to the max. speed shown in the graph above or less, in accordance with the load mass.

## Dimensions



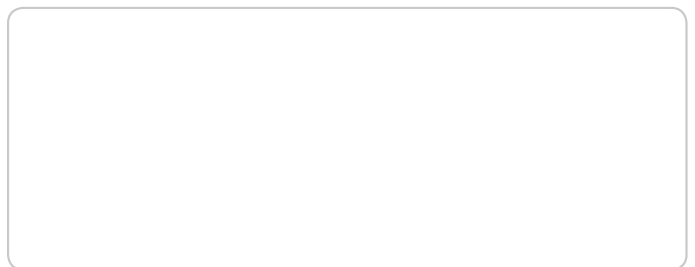
Size	A	A'	B	C	D	E	FA	FB	FS	GA	GB	H	J	KA	KB	L	MM
20	12	14	19	40	6	5.3	18.6	10.5	9	18	9.8	19	16	20.2	32.5	5	M6 x 1.0
32	19.5	22	26	62	10	7	24	14	5	20.7	10	27	24	32	52	8	M10 x 1.25

Size	NN	OO	P	Q	R	RA	T	U	YY	S	Z
20	M4 x 0.7 Depth 8	M4 x 0.7 Depth 5	5.5	1	3	1.5	9.3 Depth 5.4	1.3	M4 x 0.7 Depth 5	38	57
32	M6 x 1.0 Depth 12.5	M5 x 0.8 Depth 8	6.6	3.4	6	3	11 Depth 6.5	2.1	M6 x 1 Depth 6	43	70

## Caution

When securing a workpiece to the end of the piston rod, ensure that the piston rod is fully retracted, and place a wrench on the portion of the rod that protrudes. Then, tighten without applying tightening torque to the piston rod.



## SMC Corporation (Europe)

<b>Austria</b>	+43 (0)2262622800	www.smc.at	office@smc.at
<b>Belgium</b>	+32 (0)33551464	www.smc.be	info@smc.be
<b>Bulgaria</b>	+359 (0)2807670	www.smc.bg	office@smc.bg
<b>Croatia</b>	+385 (0)13707288	www.smc.hr	office@smc.hr
<b>Czech Republic</b>	+420 541424611	www.smc.cz	office@smc.cz
<b>Denmark</b>	+45 70252900	www.smc.dk.com	smc@smcdk.com
<b>Estonia</b>	+372 6510370	www.smc.pneumatics.ee	info@smcee.ee
<b>Finland</b>	+358 207513513	www.smc.fi	smc.fi@smc.fi
<b>France</b>	+33 (0)164761000	www.smc-france.fr	info@smc-france.fr
<b>Germany</b>	+49 (0)61034020	www.smc.de	info@smc.de
<b>Greece</b>	+30 210 2717265	www.smchellas.gr	sales@smchellas.gr
<b>Hungary</b>	+36 23513000	www.smc.hu	office@smc.hu
<b>Ireland</b>	+353 (0)14039000	www.smc.automation.ie	sales@smc.automation.ie
<b>Italy</b>	+39 03990691	www.smc.italy.it	mailbox@smc.italy.it
<b>Latvia</b>	+371 67817700	www.smc.lv	info@smc.lv

<b>Lithuania</b>	+370 5 2308118	www.smclt.lt	info@smclt.lt
<b>Netherlands</b>	+31 (0)205318888	www.smc.nl	info@smc.nl
<b>Norway</b>	+47 67129020	www.smc-norge.no	post@smc-norge.no
<b>Poland</b>	+48 222119600	www.smc.pl	office@smc.pl
<b>Portugal</b>	+351 214724500	www.smc.eu	apoioclientept@smc.smces.es
<b>Romania</b>	+40 213205111	www.smcromania.ro	smcromania@smcromania.ro
<b>Russia</b>	+7 8123036600	www.smc.eu	sales@smcru.com
<b>Slovakia</b>	+421 (0)413213212	www.smc.sk	office@smc.sk
<b>Slovenia</b>	+386 (0)73885412	www.smc.si	office@smc.si
<b>Spain</b>	+34 945184100	www.smc.eu	post@smc.smces.es
<b>Sweden</b>	+46 (0)86031200	www.smc.nu	smc@smc.nu
<b>Switzerland</b>	+41 (0)523963131	www.smc.ch	info@smc.ch
<b>Turkey</b>	+90 212 489 0 440	www.smc.pneumatik.com.tr	info@smc.pneumatik.com.tr
<b>UK</b>	+44 (0)845 121 5122	www.smc.uk	sales@smc.uk

**SMC Corporation** Akihabara UDX 15F, 4-14-1, Sotokanda, Chiyoda-ku, Tokyo 101-0021, JAPAN Phone: 03-5207-8249, Fax: 03-5298-5362